

直流电动机 DC MOTORS

40W

□90mm



电机性能参数 MOTOR PERFORMANCE PARAMETERS

型号 Model	电压 Voltage V	输出功率 Out put Power W	空载参数No-load Parameters		负载参数Load Parameters			电刷寿命 Brush Life H	电机重量 Motr Weight Kg
			转速Speed r/min	电流Current A	转速Speed r/min	力矩Torque mN.m	电流Current A		
Z5D40-12□	12	40	3100	2.0 Max	2800	136	5.2	2000	1.9
Z5D40-24□	24	40	3000	1.0 Max	2800	136	2.2	2000	1.9
Z5D40-90□	90	40	3200	0.3 Max	3000	127	0.7	2000	1.9

- 电机电压、功率及转速可在配件尺寸等条件下根据客户要求定制。
- Motor voltage, power and speed will be customized accrding to his requestment under the allowed circumstance of adoptable dimension.

种类 TYPE

● 电动机 MOTOR

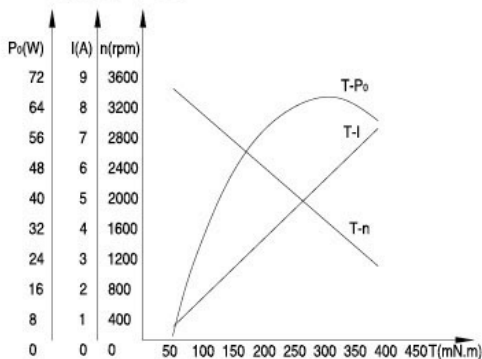
机型 Type	型号 Model	
	齿轮轴型 Pinion Shaft	圆轴型 Round Shaft
导线型 Lead Wire Type	Z5D40-12GN Z5D40-24GN Z5D40-90GN	Z5D40-12A Z5D40-24A Z5D40-90A

● 平行轴减速器(另售) PARALLEL SHAFT GEARHEAD (SOLD SEPARATELY)

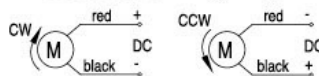
减速器种类 Gearhead Type	减速器型号 Gearhead Model	减速比 Gear Ratio
长寿命·低噪音 Long Life · Low Noise	5GN□K 5GN10XK (中间减速器Mid-gearbox)	3、3.6、5、6、7.5、9、 12.5、15、18、25、30、 36、50、60、75、90、 100、120、150、180、200

- 减速器型号的□中为减速比的数值 ● Enter the gear ratio in the box (□) within the model name

● 电机特性曲线 Characteristic Curve of Motor



● 电机接线图 Wiring Diagram of Motor



- 标准引出线长度: 300mm±10, 型号: UL1015 规格: AWG16; 电机引出线长度, 型号在配件尺寸等条件允许的情况下可根据客户需求定制
- Standard length of lead wire: 300mm±10, model: UL1015 type: AWG16; lead wire length, model will be customerised by dient requestmant under allowed circumstance of adoptable dimension

■ 装有减速器时的容许转矩

ALLOWABLE TORQUE WHEN BEING WITH GEARHEAD

- 减速器·中间减速器另售
- 减速器型号的□中为减速比的数值。
- 色表示与电动机同一方向运转，其他则为相反方向。
- 转速是以电动机的额定转速为基准除以减速比而算出来的数值。实际转速将随负载大小变化而比所示数值减少2%~20%左右。
- 希望以大于下表的减速比进行进一步减速时，可在电动机与减速器之间安装减速比为10的中间减速器。这时的容许转矩为10N·m
- Gearhead and mid-gearbox can be sold separately.
- Enter the gear ratio in the box (□) within the model name.
- Indicates the same rotating direction of the motor while the others rotate in the opposite direction.
- The speed is calculated by dividing the motor's synchronous speed by the gear ratio. The actual speed is 2%~20% less than the displayed value, depending on the size of the load.
- To reduce the speed beyond the gear ratio in the table, attach a mid-gearbox (gear ratio: 10) between the gearhead and motor. In that case, the permissible torque is 10N·m.

容许力矩单位 Allowance Torque Unit: 上段 Upside (N·m) / 下段 Belowside (kgf·cm)

机型Type	减速比Gear Ratio	3	3.6	5	6	7.5	9	12.5	15	18	25	30	36	50	60	75	90	100	120	150	180	200
		转速Speed r/min	933	777	560	466	373	311	224	186	155	112	93	77	56	46	37	31	28	23	18	15
Z5D40-24GN	5GN K	0.33	0.39	0.55	0.66	0.82	0.99	1.38	1.65	1.98	2.48	2.98	3.58	4.50	5.40	6.75	8.10	9.00	10.0	10.0	10.0	10.0
		3.37	4.05	5.63	6.76	8.45	10.1	14.1	16.9	20.2	25.4	30.4	36.5	45.9	55.1	68.9	82.6	91.8	100	100	100	100

■ 容许悬挂负载·容许轴向负载

PERMISSIBLE OVERHUNG LOAD AND THRUST LOAD

电动机(圆轴型)→217页
减速器→217页

Motor(Round Shaft)→P217
Gearhead→P217

■ 减速器的容许负载惯性惯量J

PERMISSIBLE LOAD INERTIA J FOR GEARHEAD

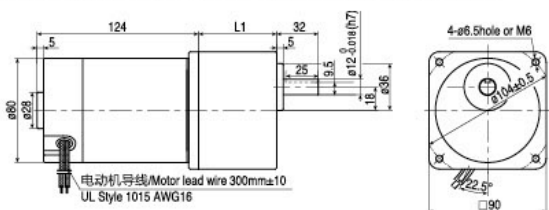
→218页→P218

■ 外形图(单位 mm) DIMENSIONS(Unit mm)

减速器附有安装用螺丝 Mounting screws are included with gearhead.

● 导线型 Lead wiring Type

重量 Weight: 电动机 Motor 1.8kg 减速器 Gearhead 0.80kg

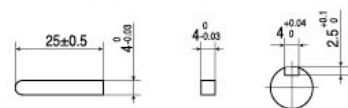


电动机型号 Motor Model	减速器型号 Gearhead Model	减速比 Gear Ratio	L1
Z5D40-12GN	5GN K	3~18	42
Z5D40-24GN		25~200	60
Z5D40-90GN			

- 减速器型号的□中为减速比的数值
- Enter the gear ratio in the box (□) within the model name

● 键·键槽(减速器附件)

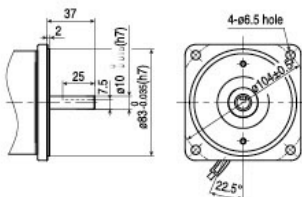
Key-keyway (The key is included with the gearhead)



● 圆轴型的转轴部分 Shaft Section of Round Shaft Type

除重量及轴部外,电动机外形与齿轴型相同

Excluding weight and the shaft section Motor shape are the same as those of the pinion shaft



● 中间减速器 Mid-gearbox

可安装在GU齿轮轴型上

Can be connected to GN pinion Shaft type 5GN10XK

重量 Weight: 0.6kg

