

小型交流减速电机型号说明方法 TYPE AND MODEL NUMBER

小型交流减速电机型号说明方法 TYPE AND MODEL NUMBER

电动机型号说明 DESCRIPTION OF MOTOR MODEL

ZH - 100 - 50 - SZ - B - G1 - LD - Q1

① ② ③ ④ ⑤ ⑥ ⑦ ⑧

① 箱体结构基本代号Basic Stcture; ZH (卧式Horizontal), ZV(卧式Vertical)

② 输出功率Output:100W,200W,400W,750W1500W,2200W,3700W

③ 齿轮箱的减速比Gear Ratio:3,5,10...1800

④ 电机的基本结构Motor Basic Data:

S:三相电机3-Phase Motor, 220-240/380-415V, 50/60Hz

C:单相电机1-Phase Motor, 220V, 50/60Hz

E:单相电机1-Phase Motor, 110V, 50/60Hz

DV:单相双电压电机Double Voltage Motor, 110V/220V, 50Hz/60Hz

Z:缩框型减速电机Light Type Duty

⑤ 刹车器Brake Unit

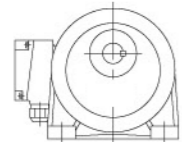
B: DC90V断电刹车器Brake Unit

YB:手持放刹车器 With Rsisase Brake Unit

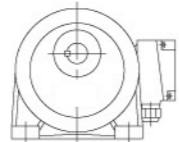
⑥ 出轴端看接线盒方位 (如图示) Terminal Box Direction From Optput Shaft

G1: 左方向Left G2: 右方向Right G3: 上方向Top G4: 下方向Down

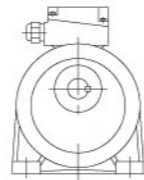
ZH型
ZH Type



G1 左方向Left



G2 右方向Right

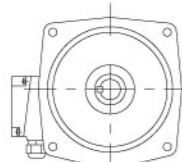


G3 上方向Top

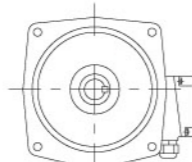


G4 下方向Down

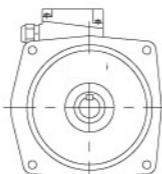
ZV型
ZV Type



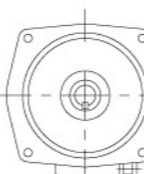
G1 左方向Left



G2 右方向Right



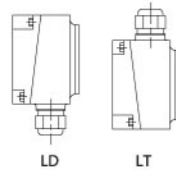
G3 上方向Top



G4 下方向Down

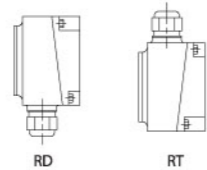
⑦ 出轴端看引出线方位 (如图示) Lead Direction From Optput Shaft

T: 向上Top D: 向下Down F: 向前 Forward B: 向后Back L: 向左Left R: 向右 Right



LD

LT



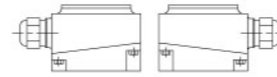
RD

RT



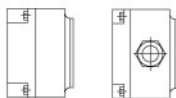
TL

TR



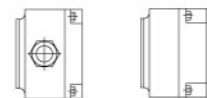
DL

DR



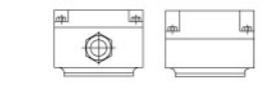
LF

LB



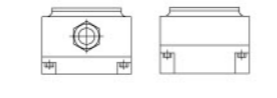
RF

RB



TF

TB



DF

DB

⑧ 出厂标准安装形式: Standard installaion method

本公司出厂所有减速器适用如图安装形式

All of our company's reducer can apply to the following kinds of installation method

图中Q1、Q4、Q7、Q8中注油孔方向为标准型

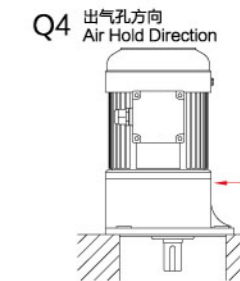
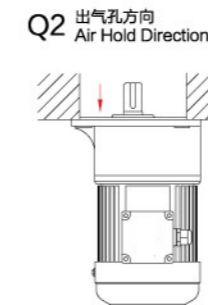
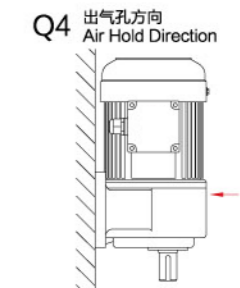
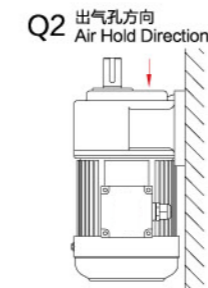
In the diagram, Q1, Q4, Q7, Q8 are our standard types of oil hole direction

注油孔在特殊位置的, 请特别告知, 本公司将修改出气孔位置

Pls inform us if the location of oil hole is special, we will modify it

实际使用时, 建议将注油孔中的堵油销拔出, 以平衡减速箱内的压力

pls pull out the pin of the oil plug to reduce the pressuer in the gearbox during running



备注:

订购变频电机时, 请说明变频范围, 减速电机的使用环境工作方式等。

带刹车减速电机总长度需增加10mm。

For motors supplied by transducer please tell us detailed working modes and working ambient.

The total length of brake motors will be 10mm longer than standard motors