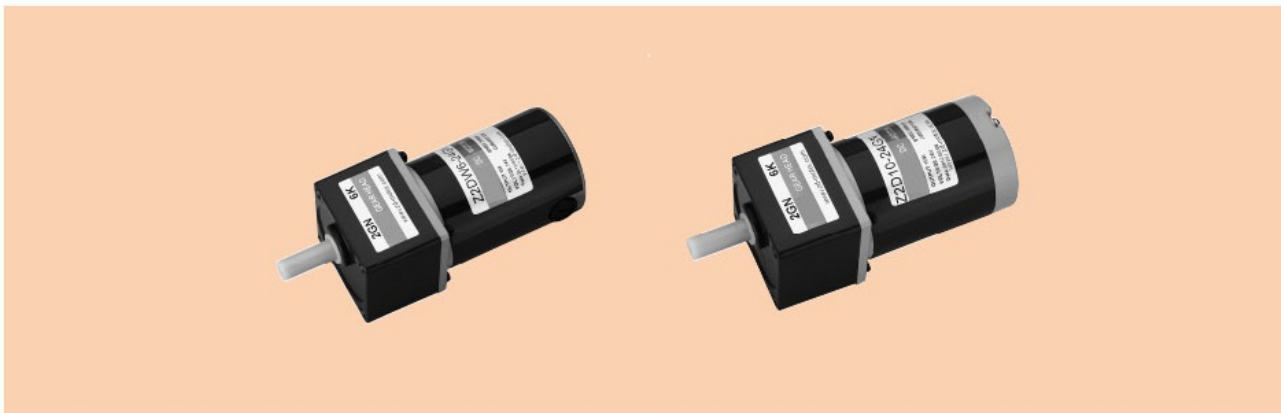


# 直流电动机 DC MOTORS

## 6W

### 60mm



## 电机性能参数 MOTOR PERFORMANCE PARAMETERS

型号 Model	电压 Voltage V	输出功率 Out put Power W	空载参数No-load Parameters		负载参数Load Parameters			电刷寿命 Brush Life H	电机重量 Motr Weight Kg
			转速Speed r/min	电流Current A	转速Speed r/min	力矩Torque mN.m	电流Current A		
Z2D06-12□	12	6	3200	0.6 Max	2950	19	0.8	2000	0.6
Z2DW06-12□	12	6	3200	0.6 Max	2950	19	0.8	2000	0.6
Z2D06-24□	24	6	3200	0.3 Max	2950	19	0.5	2000	0.6
Z2DW06-24□	24	6	3200	0.3 Max	2950	19	0.5	2000	0.6
Z2D06-90□	90	6	3000	0.2 Max	2800	20	0.3	2000	0.6
Z2DW06-90□	90	6	3000	0.2 Max	2800	20	0.3	2000	0.6

● 电机电压、功率及转速可在配件尺寸等条件下根据客户要求定制。● D后如加W即Z2DW06-12GN表示外置电刷齿轴电机，如无W则为标准内置电刷齿轴电机：外置电刷电机，用户可自行在外部更换电刷；内置电刷电机更换电刷时需将电机拆装后方可更换。

● Motor voltage, power and speed will be customized according to his request under the allowed circumstance of adoptable dimension. ● WE use W after D in the model to express the external brush motor, such as Z2DW06-12GN. If no W, it means the standard internal brush motor. For external brush motor, you can replace the brush directly. For internal ones, we need to disassembly the motor first.

## 种类 TYPE

### ● 电动机 MOTOR

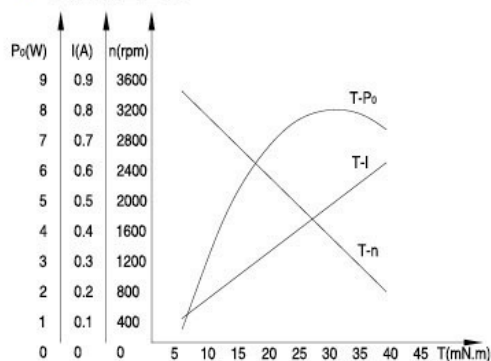
机型号 Type	型号 Model	
	齿轮轴型 Pinion Shaft	圆轴型 Round Shaft
导线型 Lead	Z2D06-12GN	Z2D06-12A
Wire	Z2DW06-12GN	Z2DW06-12A
Type	Z2D06-24GN	Z2D06-24A
	Z2DW06-24GN	Z2DW06-24A
	Z2D06-90GN	Z2D06-90A
	Z2DW06-90GN	Z2DW06-90A

### ● 平行轴减速器(另售) PARALLEL SHAFT GEARHEAD (SOLD SEPARATELY)

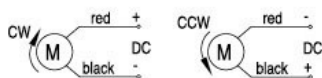
减速器种类 Gearhead Type	减速器型号 Gearhead Model	减速比 Gear Ratio
长寿命·低噪音 Long Life · Low Noise	2GN□K	3、3.6、5、6、7.5、9、 12.5、15、18、25、30、 36、50、60、75、90、 100、120、150、180、200
	2GN10XK(中间减速器Mid-gearbox)	

● 减速器型号的□中为减速比的数值 ● Enter the gear ratio in the box (□) within the model name

### ● 电机特性曲线 Characteristic Curve of Motor



### ● 电机接线图 Wiring Diagram of Motor



● 标准引出线长度：300mm±10，型号：UL1015 规格：AWG20；电机引出线长度，型号在配件尺寸等条件允许的情况下可根据客户需求定制

● Standard length of lead wire: 300mm±10, model: UL1015 type: AWG20; lead wire length, model will be customised by client request under allowed circumstance of adoptable dimension

## ■ 装有减速器时的容许转矩

### ALLOWABLE TORQUE WHEN BEING WITH GEARHEAD

- 减速器·中间减速器另售
- 减速器型号的□中为减速比的数值。
- □色表示与电动机同一方向运转，其他则为相反方向。
- 转速是以电动机的额定转速为基准除以减速比而算出来的数值。实际转速将随负载大小变化而比所示数值减少2%~20%左右。
- 希望以大于下表的减速比进行进一步减速时，可在电动机与减速器之间安装减速比为10的中间减速器。这时的容许转矩为3N·m
- Gearhead and mid-gearbox can be sold separately.
- Enter the gear ratio in the box (□) within the model name.
- □ Indicates the same rotating direction of the motor while the others rotate in the opposite direction.
- The speed is calculated by dividing the motor's synchronous speed by the gear ratio. The actual speed is 2%~20% less than the displayed value, depending on the size of the load.
- To reduce the speed beyond the gear ratio in the table, attach a mid-gearbox (gear ratio: 10) between the gearhead and motor. In that case, the permissible torque is 3N·m.

容许力矩单位 Allowance Torque Unit: 上段 Upside (N.m) / 下段 Belowside (kgf.cm)

机型Type	减速比Gear Ratio	3	3.6	5	6	7.5	9	12.5	15	18	25	30	36	50	60	75	90	100	120	150	180	200
		转速Speed r/min	983	819	590	491	393	327	236	196	163	118	98	81	59	49	39	32	29	24	19	16
Z2D06-12GN	2GN□K	0.04	0.05	0.07	0.09	0.11	0.14	0.19	0.23	0.28	0.35	0.42	0.51	0.70	0.76	0.96	1.15	1.28	1.53	1.92	2.30	2.56
		0.48	0.57	0.80	0.96	1.20	1.45	2.00	2.40	2.89	3.61	4.34	5.21	7.23	7.85	9.81	11.7	13.1	15.6	19.6	23.5	26.1

## ■ 容许悬挂负载·容许轴向负载

### PERMISSIBLE OVERHUNG LOAD AND THRUST LOAD

电动机(圆轴型)→217页  
减速器→217页

Motor(Round Shaft)→P217  
Gearhead→P217

## ■ 减速器的容许负载惯性惯量J

### PERMISSIBLE LOAD INERTIA J FOR GEARHEAD

→218页→P218

## ■ 外形图(单位 mm)

### DIMENSIONS(Unit mm)

减速器附有安装用螺丝

Mounting screws are included with gearhead.

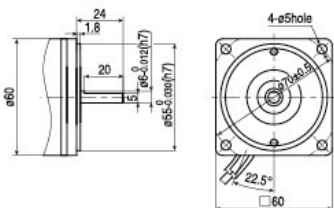
电动机型号 Motor Model	减速器型号 Gearhead Model	减速比 Gear Ratio	L1
Z2D06-12GN Z2DW06-12GN	2GN□K	3~18	32
Z2D06-24GN Z2DW06-24GN		25~200	41
Z2D06-90GN Z2DW06-90GN			

- 减速器型号的□中为减速比的数值
- Enter the gear ratio in the box (□) within the model name

### ● 圆轴型的转轴部分 Shaft Section of Round Shaft Type

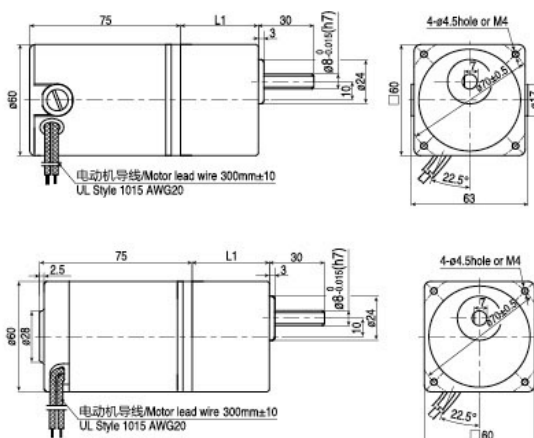
除重量及轴部外，电动机外形与齿轴型相同

Excluding weight and the shaft section Motor shape are the same as those of the pinion shaft



### ● 导线型 Lead wiring Type

重量 Weight: 电动机 Motor 0.6kg 减速器 Gearhead 0.4kg



### ● 中间减速器 Mid-gearbox

可安装在GN齿轮轴型上

Can be connected to GN pinion Shaft type 2GN10XK

重量 Weight: 0.24kg

