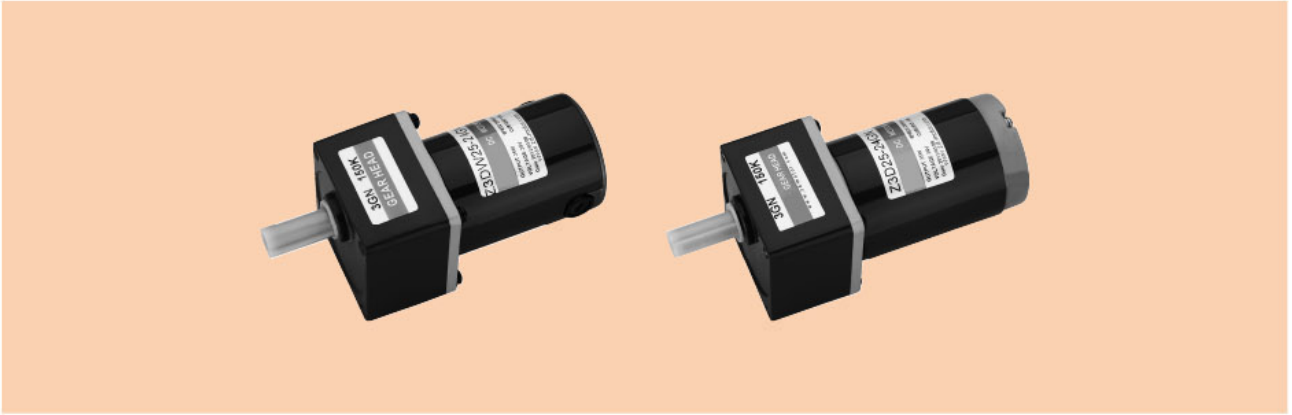


# 直流电动机 DC MOTORS

## 25W

### 70mm



## 电机性能参数 MOTOR PERFORMANCE PARAMETERS

型号 Model	电压 Voltage V	输出功率 Out put Power W	空载参数No-load Parameters		负载参数Load Parameters			电刷寿命 Brush Life H	电机重量 Motr Weight Kg
			转速Speed r/min	电流Current A	转速Speed r/min	力矩Torque mN.m	电流Current A		
Z3D25-12□	12	25	3300	1.0 Max	3000	80	2.0	2000	1.0
Z3DW15-22□	12	25	3300	1.0 Max	3000	80	2.0	2000	1.0
Z3D25-24□	24	25	3200	0.5 Max	2800	85	1.0	2000	1.0
Z3DW25-24□	24	25	3200	0.5 Max	2800	85	1.0	2000	1.0
Z3D25-90□	90	25	3100	0.3 Max	2700	88	0.4	2000	1.0
Z3DW25-90□	90	25	3100	0.3 Max	2700	88	0.4	2000	1.0

● 电机电压、功率及转速可在配件尺寸等条件下根据客户要求定制。● D后如加W即Z3DW25-12GN表示外置电刷齿轴电机，如无W则为标准内置电刷齿轴电机；外置电刷电机，用户可自行在外部更换电刷；内置电刷电机更换电刷时需将电机拆装后方可更换。

● Motor voltage, power and speed will be customized accrding to his requestment under the allowed circumstance of adoptable dimension. ● WE use W after D in the model to express the external brush motor, such as Z3DW25-12GN. If no W, it means the standard internal brush motor. For external brush motor, you can replce the brush directly. For internal ones, we need to disassembly the motor first.

## 种类 TYPE

### 电动机 MOTOR

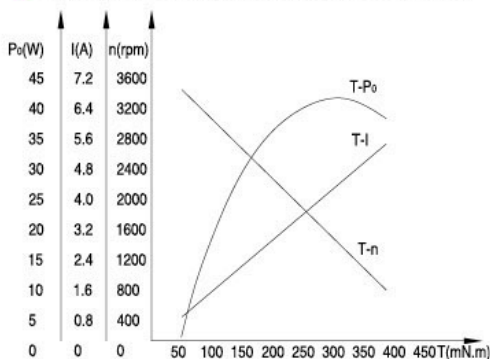
机型 Type	型号 Model	
	齿轮轴型 Pinion Shaft	圆轴型 Round Shaft
导线型 Lead Wire Type	Z3D25-12GN Z3DW25-12GN Z3D25-24GN Z3DW25-24GN Z3D25-90GN Z3DW25-90GN	Z3D25-12A Z3DW25-12A Z3D25-24A Z3DW25-24A Z3D25-90A Z3DW25-90A

### 平行轴减速器(另售) PARALLEL SHAFT GEARHEAD (SOLD SEPARATELY)

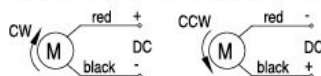
减速器种类 Gearhead Type	减速器型号 Gearhead Model	减速比 Gear Ratio
长寿命·低噪音 Long Life·Low Noise	3GN□K 3GN10XK(中间减速器Mid-gearbox)	3、3.6、5、6、7.5、9、 12.5、15、18、25、30、 36、50、60、75、90、 100、120、150、180、200

● 减速器型号的□中为减速比的数值 ● Enter the gear ratio in the box ( □ ) within the model name

### 电机特性曲线 Characteristic Curve of Motor



### 电机接线图 Wiring Diagram of Motor



● 标准引出线长度: 300mm±10, 型号: UL1015 规格: AWG20; 电机引出线长度, 型号在配件尺寸等条件允许的情况下可根据客户需求定制

● Stanclard length of lead wire: 300mm±10, model: UL1015 type: AWG20; lead wire length, model will be customised by dient requestmant under allowed circumstance of adoptable dimension

## ■ 装有减速器时的容许转矩

### ALLOWABLE TORQUE WHEN BEING WITH GEARHEAD

- 减速器·中间减速器另售
- 减速器型号的□中为减速比的数值。
- □色表示与电动机同一方向运转，其他则为相反方向。
- 转速是以电动机的额定转速为基准除以减速比而算出来的数值。实际转速将随负载大小变化而比所示数值减少2%~20%左右。
- 希望以大于下表的减速比进行进一步减速时，可在电动机与减速器之间安装减速比为10的中间减速器。这时的容许转矩为5N·m
- Gearhead and mid-gearbox can be sold separately.
- Enter the gear ratio in the box (□) within the model name.
- □ Indicates the same rotating direction of the motor while the others rotate in the opposite direction.
- The speed is calculated by dividing the motor's synchronous speed by the gear ratio. The actual speed is 2%~20% less than the displayed value, depending on the size of the load.
- To reduce the speed beyond the gear ratio in the table, attach a mid-gearbox (gear ratio: 10) between the gearhead and motor. In that case, the permissible torque is 5N·m.

容许力矩单位 Allowance Torque Unit: 上段 Upside (N·m) / 下段 Belowside (kgf·cm)

机型Type	减速比Gear Ratio	3	3.6	5	6	7.5	9	12.5	15	18	25	30	36	50	60	75	90	100	120	150	180	200	
		转速Speed r/min	933	777	560	466	373	311	224	186	155	112	93	77	56	46	37	31	28	23	18	15	14
Z3D25-24GN	3GN□K	0.20	0.24	0.34	0.41	0.51	0.62	0.86	1.03	1.12	1.55	1.86	2.24	3.11	3.37	4.22	5.0	5.0	5.0	5.0	5.0	5.0	5.0
		2.11	2.53	3.52	4.22	5.28	6.34	8.80	10.5	11.4	15.8	19.0	22.8	31.7	34.4	43.1	50	50	50	50	50	50	50

## ■ 容许悬挂负载·容许轴向负载

### PERMISSIBLE OVERHUNG LOAD AND THRUST LOAD

电动机(圆轴型)→P217页

Motor(Round Shaft)→P217

减速器→P217页

Gearhead→P217

## ■ 减速器的容许负载惯性惯量J

### PERMISSIBLE LOAD INERTIA J FOR GEARHEAD

→P218页→P218

## ■ 外形图(单位 mm)

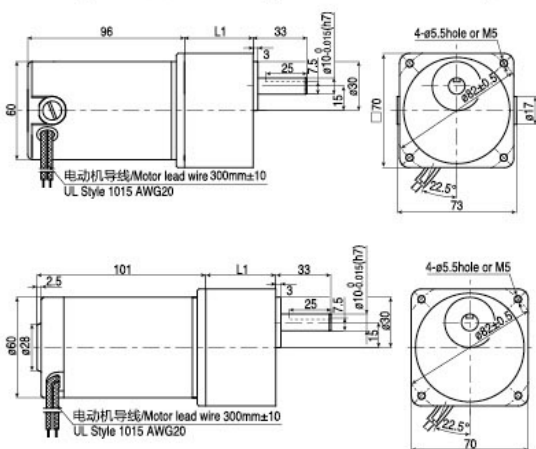
### DIMENSIONS(Unit mm)

减速器附有安装用螺丝

Mounting screws are included with gearhead.

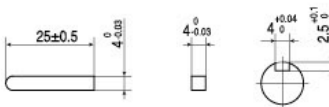
#### ● 导线型 Lead wiring Type

重量 Weight: 电动机 Motor 1.0kg 减速器 Gearhead 0.55kg



#### ● 键·键槽(减速器附件)

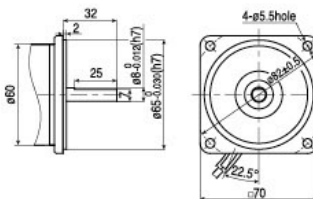
Key-keyway (The key is included with the gearhead)



#### ● 圆轴型的转轴部分 Shaft Section of Round Shaft Type

除重量及轴部外,电动机外形与齿轴型相同

Excluding weight and the shaft section Motor shape are the same as those of the pinion shaft

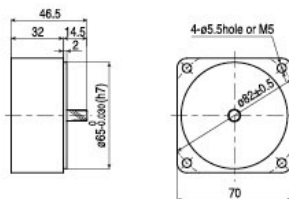


#### ● 中间减速器 Mid-gearbox

可安装在GN齿轮轴型上

Can be connected to GN pinion Shaft type 3GN10XK

重量 Weight: 0.31kg



电动机型号 Motor Model	减速器型号 Gearhead Model	减速比 Gear Ratio	L1
Z3D25-12GN	3GN□K	3~18	32
Z3DW25-12GN			
Z3D25-24GN			
Z3DW25-24GN	25~200	42	
Z3D25-90GN			
Z3DW25-90GN			

- 减速器型号的□中为减速比的数值
- Enter the gear ratio in the box (□) within the model name