

调速电动机 SPEED CONTROL MOTORS

120W

□90mm

CE CCC PA RoHS ISO9001



规格 / 连续额定 SPECS / CONTINUOUS RATING

品名 Model 机型 Type		输出功率 Output power W	电压 Voltage V	频率 Frequency Hz	调速范围 Speed Control Range r/min	额定转矩 Rated Torque		启动转矩 Starting Torque mN.m	电流 Current A	电容器容量 Capacitor μ F
导线型 Lead Wire Type	圆轴型 Round Shaft					120r/min mN.m	120r/min mN.m			
5IK120RGU-AF	5IK120RA-AF	120	1ph100	50	90~1400	750	330	530	3.50	30.0
			1ph110		90~1700					
5IK120RGU-EF	5IK120RA-EF	120	1ph120	60	90~1700	750	360	530	3.25	25.0
			1ph220							
5IK120RGU-CF	5IK120RA-CF	120	1ph230	50	90~1400	750	330	530	1.50	7.0
			1ph220							
5IK120RGU-HF	5IK120RA-HF	120	1ph230	60	90~1700	750	360	530	1.50	

● 各种安全规格以电动机铭牌上的型号取得认定。

● When the motor is approved under various safety standards, the model name on the nameplate is the approved model name.

种类 TYPE

● 电动机 MOTOR

机型 Type	型号 Model	
	齿轮轴型 Pinion Shaft	圆轴型 Round Shaft
导线型 Lead Wire Type	5IK120RGU-AF	5IK120RA-AF
	5IK120RGU-EF	5IK120RA-EF
	5IK120RGU-CF	5IK120RA-CF
	5IK120RGU-HF	5IK120RA-HF

● 平行轴减速器(另售) PARALLEL SHAFT GEARHEAD (SOLD SEPARATELY)

减速器种类 Gearhead Type	减速器型号 Gearhead Model	减速比 Gear Ratio
长寿命·低噪音 Long Life · Low Noise	5GU□KB	3、3.6、5、6、7.5、9、 12.5、15、18、25、30、 36、50、60、75、90、 100、120、150、180、200
	5GU10XK (中间减速器 Mid-gearbox)	

● 减速器型号的□中为减速比的数值

● Enter the gear ratio in the box (□) within the model name

■ 装有减速器时的容许转矩 ALLOWABLE TORQUE WHEN BEING WITH GEARHEAD

- 减速器·中间减速器另售
- 减速器型号的□中为减速比的数值。
- □ 色表示与电动机同一方向运转，其他则为相反方向。
- 转速是以电动机的同步转速 (50Hz: 1500r/min、60Hz: 1800r/min) 为基准除以减速比而算出来的数值。实际转速将随负载大小变化而比所示数值减少 2%~20% 左右。
- 希望以大于下表的减速比进行进一步减速时，可在电动机与减速器之间安装减速比为10的中间减速器。这时的容许转矩为20N·m
- Gearhead and mid-gearbox can be sold separately.
- Enter the gear ratio in the box (□) within the model name.
- The colored background □ indicates the same rotating direction of the motor while the rotating direction of others are opposite.
- The speed is calculated by dividing the motor's synchronous speed (50Hz: 1500r/min、60Hz: 1800r/min) by the gear ratio. The actual speed is 2%~20% less than the displayed value, depending on the size of the load.
- To reduce the speed beyond the gear ratio in the table, attach a mid-gearbox (gear ratio: 10) between the gearhead and motor. In that case, the permissible torque is 20N·m.

容许力矩单位 Allowance Torque Unit: 上段 Upside (N.m) / 下段 Belowside (kgf.cm)

机型Type 电动机/减速器 Motor/Gearhead	减速比Gear Ratio		3	3.6	5	6	7.5	9	12.5	15	18	25	30	36	50	60	75	90	100	120	150	180	200	
	转速Speed r/min		50Hz	60Hz	50Hz	60Hz	50Hz	60Hz	50Hz	60Hz	50Hz	60Hz	50Hz	60Hz	50Hz	60Hz	50Hz	60Hz	50Hz	60Hz	50Hz	60Hz	50Hz	60Hz
5IK120RGU-AF	5GU□KB	50Hz	2.3	2.7	3.8	4.5	5.6	6.8	8.5	10.2	12.2	15.3	18.4	20	20	20	20	20	20	20	20	20	20	20
5IK120RGU-EF		60Hz	23.4	27.5	38.7	45.9	57.1	69.3	86.7	104	124	156	187	200	200	200	200	200	200	200	200	200	200	200
5IK120RGU-CF		50Hz	1.8	2.2	3.0	3.6	4.6	5.5	6.8	8.2	9.8	12.4	14.9	17.8	20	20	20	20	20	20	20	20	20	20
5IK120RGU-HF		60Hz	18.3	22.4	30.6	36.7	46.9	56.1	69.5	83.6	100	126	152	181	200	200	200	200	200	200	200	200	200	200

■ 容许悬挂负载·容许轴向负载 PERMISSIBLE OVERHUNG LOAD AND THRUST LOAD

电动机 (圆轴型) → P217页 Motor (Round Shaft) → P217
 减速器 → P217页 Gearhead → P217

■ 减速器的容许负载惯性惯量 J PERMISSIBLE LOAD INERTIA J FOR GEARHEAD

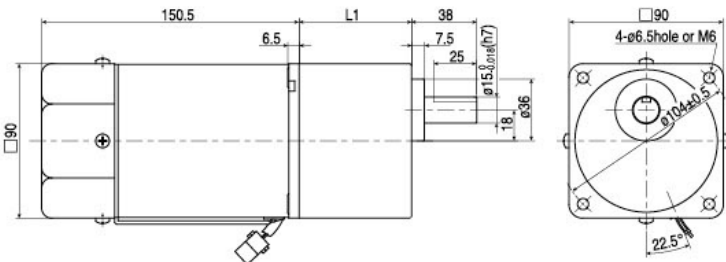
→ P218页 → P218

■ 外形图 (单位 mm) DIMENSIONS (Unit mm)

减速器附有安装用螺丝
 Mounting screws are included with gearhead.

● 导线型 Lead wiring Type

重量 Weight: 电动机 Motor 3.5kg 减速器 Gearhead 1.5kg



电动机型号 Motor Model	减速器型号 Gearhead Model	减速比 Gear Ratio	L1
5IK120RGU-AF	5GU□KB	3~200	65.5
5IK120RGU-EF			
5IK120RGU-CF			
5IK120RGU-HF			

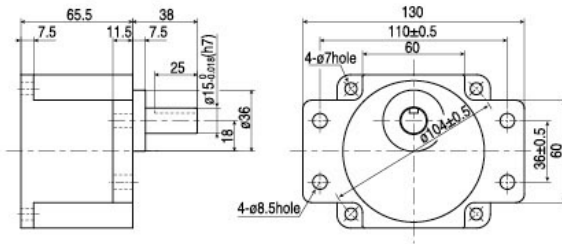
- 减速器型号的□中为减速比的数值
- Enter the gear ratio in the box (□) within the model name

●凸缘安装型减速器Flange Mounting Reducer

可安装在GU齿轮轴型上

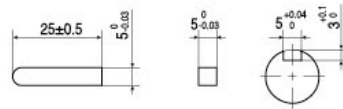
Can be Mounted on GU Type gear shaft 5GU□K

重量 Weight: 1.5kg



●键·键槽 (减速器附件)

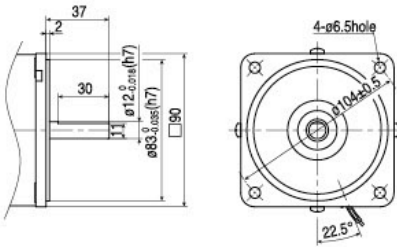
Key-keyway (The key is included with the gearhead)



●圆轴型的转轴部分Shaft Section of Round Shaft Type

除重量及轴部外,电动机外形与齿轮轴相同

Excluding weight and the shaft section Motor shape are the same as those of the pinion shaft

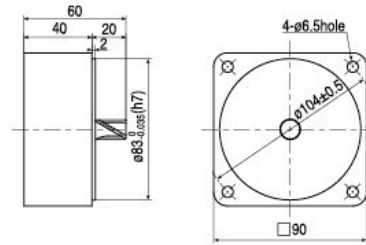


●中间减速器 Mid-gearbox

可安装在GU齿轮轴型上

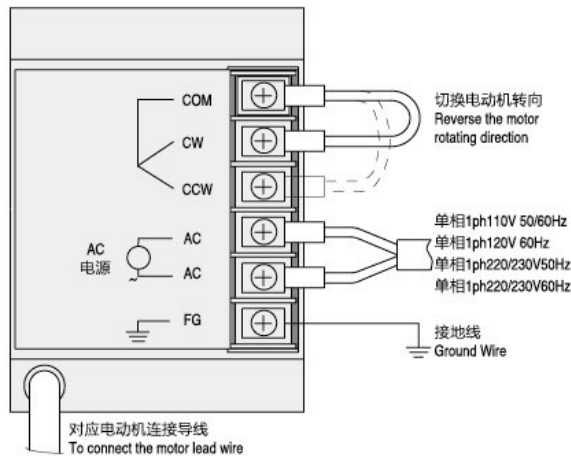
Can be connected to GU pinion Shaft type 5GU10XK

重量Weight:0.65kg



连接图 CONNECTION DIAGRAMS

US型/JS Type



SS型/SS Type

