

调速电动机 SPEED CONTROL MOTORS

90W

□ 90mm

CE CCC UL RoHS ISO9001



规格 / 连续额定 SPECS / CONTINUOUS RATING

品名 Model 导线型 Lead Wire Type	机型 Type 圆轴型 Round Shaft	输出功率 Output power W	电压 Voltage V	频率 Frequency Hz	调速范围 Speed Control Range r/min	额定转矩 Rated Torque		启动转矩 Starting Torque mN.m	电流 Current A	电容器容量 Capacitor μ F
						120r/min mN.m	120r/min mN.m			
5IK90RGU-AF	5IK90RA-AF	90	1ph100	50	90~1400	710	230	405	2.75	25.0
			1ph110		90~1700		260			
5IK90RGU-EF	5IK90RA-EF	90	1ph120	60	90~1700	710	260	410	2.60	20.0
			1ph220		90~1400		230			
5IK90RGU-CF	5IK90RA-CF	90	1ph230	50		90~1400		710	230	410
			1ph220		90~1700		260			
5IK90RGU-HF	5IK90RA-HF	90	1ph230	60		90~1700		710	260	410

● 各种安全规格以电动机铭牌上的型号取得认定。

● When the motor is approved under various safety standards, the model name on the nameplate is the approved model name.

种类 TYPE

● 电动机 MOTOR

机型 Type	型号 Model	
	齿轮轴型 Pinion Shaft	圆轴型 Round Shaft
导线型 Lead Wire Type	5IK90RGU-AF	5IK90RA-AF
	5IK90RGU-EF	5IK90RA-EF
	5IK90RGU-CF	5IK90RA-CF
	5IK90RGU-HF	5IK90RA-HF

● 平行轴减速器(另售) PARALLEL SHAFT GEARHEAD (SOLD SEPARATELY)

减速器种类 Gearhead Type	减速器型号 Gearhead Model	减速比 Gear Ratio
长寿命·低噪音 Long Life · Low Noise	5GU□KB	3、3.6、5、6、7.5、9、 12.5、15、18、25、30、 36、50、60、75、90、 100、120、150、180、200
	5GU10XK(中间减速器Mid-gearbox)	

● 减速器型号的□中为减速比的数值

● Enter the gear ratio in the box (□) within the model name

■ 装有减速器时的容许转矩

ALLOWABLE TORQUE WHEN BEING WITH GEARHEAD

- 减速器·中间减速器另售
- 减速器型号的□中为减速比的数值。
- □ 色表示与电动机同一方向运转，其他则为相反方向。
- 转速是以电动机的同步转速 (50Hz: 1500r/min、60Hz: 1800r/min) 为基准除以减速比而算出来的数值。实际转速将随负载大小变化而比所示数值减少 2%~20% 左右。
- 希望以大于下表的减速比进行进一步减速时，可在电动机与减速器之间安装减速比为10的中间减速器。这时的容许转矩为20N·m
- Gearhead and mid-gearbox can be sold separately.
- Enter the gear ratio in the box (□) within the model name.
- The colored background □ indicates the same rotating direction of the motor while the rotating direction of others are opposite.
- The speed is calculated by dividing the motor's synchronous speed (50Hz: 1500r/min、60Hz: 1800r/min) by the gear ratio. The actual speed is 2%~20% less than the displayed value, depending on the size of the load.
- To reduce the speed beyond the gear ratio in the table, attach a mid-gearbox (gear ratio: 10) between the gearhead and motor. In that case, the permissible torque is 20 N·m.

容许力矩单位 Allowance Torque Unit: 上段 Upside (N·m) / 下段 Belowside (kgf·cm)

机型Type	减速比Gear Ratio	3	3.6	5	6	7.5	9	12.5	15	18	25	30	36	50	60	75	90	100	120	150	180	200		
电动机/减速器 Motor/Gearhead	转速Speed r/min	50Hz	500	417	300	250	200	166	120	100	83	60	50	41	30	25	20	16	15	12.5	10	8.3	7.5	
	60Hz	600	500	360	300	240	200	144	120	100	72	60	50	36	30	24	20	18	15	12	10	9		
5IK90RGU-AF	5GU□KB	50Hz	1.7	2.0	2.8	3.4	4.3	5.1	6.4	7.7	9.2	11.6	13.9	16.6	20	20	20	20	20	20	20	20	20	
5IK90RGU-EF			17.3	20.4	28.6	34.7	43.9	52.0	65.3	78.6	93.3	118	142	169	200	200	200	200	200	200	200	200	200	
5IK90RGU-CF		60Hz	14	1.7	2.5	2.8	3.5	4.2	5.2	6.2	7.5	9.4	11.3	13.5	18.8	20	20	20	20	20	20	20	10	20
5IK90RGU-HF			14.3	17.3	25.5	28.6	35.7	42.9	53.1	63.3	76.5	95.9	115	138	19.2	200	200	200	200	200	200	200	200	200

■ 容许悬挂负载·容许轴向负载

PERMISSIBLE OVERHUNG LOAD AND THRUST LOAD

电动机 (圆轴型) → 217页
减速器 → 217页

Motor (Round Shaft) → P217
Gearhead → P217

■ 减速器的容许负载惯性惯量 J

PERMISSIBLE LOAD INERTIA J FOR GEARHEAD

→ 218页 → P218

■ 外形图 (单位 mm)

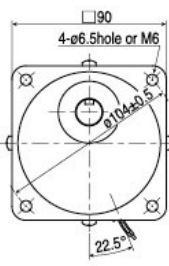
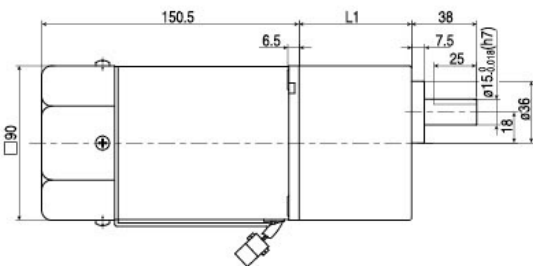
DIMENSIONS (Unit mm)

减速器附有安装用螺丝

Mounting screws are included with gearhead.

● 导线型 Lead wiring Type

重量 Weight: 电动机 Motor 3.3kg 减速器 Gearhead 1.5kg



电动机型号 Motor Model	减速器型号 Gearhead Model	减速比 Gear Ratio	L1
5IK90RGU-AF	5GU□KB	3~200	65.5
5IK90RGU-EF			
5IK90RGU-CF			
5IK90RGU-HF			

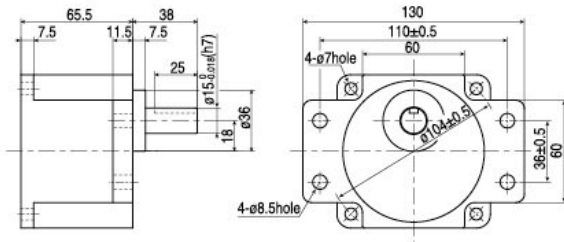
- 减速器型号的□中为减速比的数值
- Enter the gear ratio in the box (□) within the model name

●凸缘安装型减速器Flange Mounting Reducer

可安装在GU齿轮轴型上

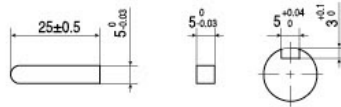
Can be Mounted on GU Type gear shaft 5GU□K

重量 Weight: 1.5kg



●键·键槽 (减速器附件)

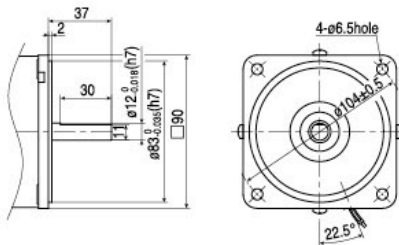
Key-keyway (The key is included with the gearhead)



●圆轴型的转轴部分Shaft Section of Round Shaft Type

除重量及轴部外, 电动机外形与齿轮轴相同

Excluding weight and the shaft section Motor shape are the same as those of the pinion shaft

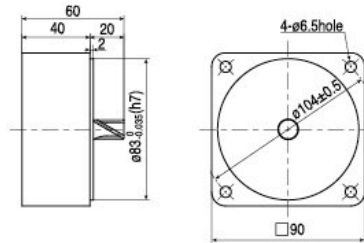


●中间减速器 Mid-gearbox

可安装在GU齿轮轴型上

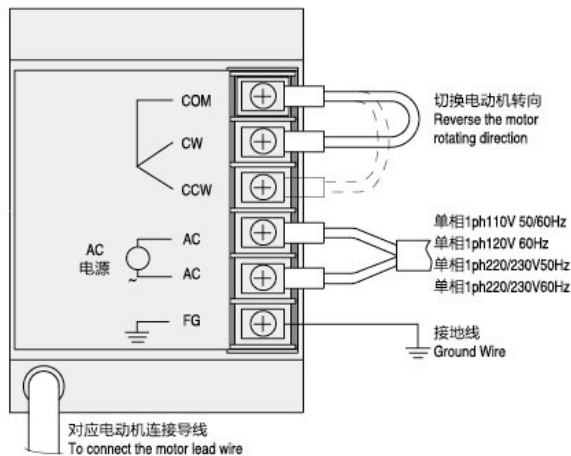
Can be connected to GU pinion Shaft type 5GU10XK

重量 Weight: 0.65kg



■连接图CONNECTION DIAGRAMS

US型/US Type



SS型/SS Type

