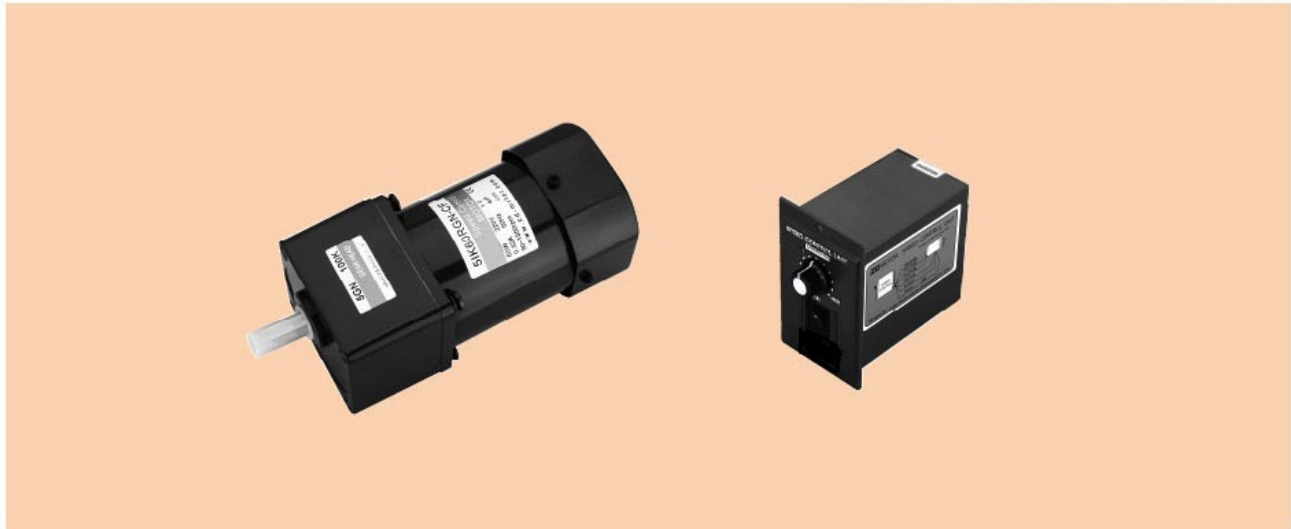


调速电动机 SPEED CONTROL MOTORS

25W

□ 80mm

CE CCC TÜV RoHS ISO9001



规格 / 连续额定 SPECS / CONTINUOUS RATING

品名 Model 机型 Type		输出功率 Output power W	电压 Voltage V	频率 Frequency Hz	调速范围 Speed Control Range r/min	额定转矩 Rated Torque		启动转矩 Starting Torque mN.m	电流 Current A	电容器容量 Capacitor μ F
导线型 Lead Wire Type	圆轴型 Round Shaft					120r/min mN.m	120r/min mN.m			
齿轮轴型 Pinion Shaft	4K25RA-A	25	1ph100	50	90~1400	190	47	88	0.75	8.0
			1ph110		90~1700					
圆轴型 Round Shaft	4K25RA-E	25	1ph120	60	90~1700	190	50	105	0.75	7.0
			1ph220		90~1400					
Pinion Shaft	4K25RA-C	25	1ph230	50	90~1400	190	47	88	0.35	1.8
			1ph220		90~1700					
Round Shaft	4K25RA-H	25	1ph230	60	90~1700	190	45	88	0.33	1.8
			1ph230		90~1700					

- 各种安全规格以电动机铭牌上的型号取得认定。
- When the motor is approved under various safety standards, the model name on the nameplate is the approved model name.

种类 TYPE

● 电动机 MOTOR

机型 Type	型号 Model	
	齿轮轴型 Pinion Shaft	圆轴型 Round Shaft
导线型 Lead Wire Type	4IK25RGN-A	4IK25RA-A
	4IK25RGN-E	4IK25RA-E
	4IK25RGN-C	4IK25RA-C
	4IK25RGN-H	4IK25RA-H

● 平行轴减速器(另售) PARALLEL SHAFT GEARHEAD (SOLD SEPARATELY)

减速器种类 Gearhead Type	减速器型号 Gearhead Model	减速比 Gear Ratio
长寿命·低噪音 Long Life · Low Noise	4GN□K	3、3.6、5、6、7.5、9、12.5、15、18、25、30、36、50、60、75、90、100、120、150、180、200
	4GN10XK (中间减速器 Mid-gearbox)	

- 减速器型号的□中为减速比的数值
- Enter the gear ratio in the box (□) within the model name

■ 装有减速器时的容许转矩

ALLOWABLE TORQUE WHEN BEING WITH GEARHEAD

- 减速器·中间减速器另售
- 减速器型号的□中为减速比的数值。
- 色表示与电动机同一方向运转，其他则为相反方向。
- 转速是以电动机的同步转速 (50Hz: 1500r/min、60Hz: 1800r/min) 为基准除以减速比而算出来的数值。实际转速将随负载大小变化而比所示数值减少 2%~20%左右。
- 希望以大于下表的减速比进行进一步减速时，可在电动机与减速器之间安装减速比为10的中间减速器。这时的容许转矩为8N·m
- Gearhead and mid-gearbox can be sold separately.
- Enter the gear ratio in the box (□) within the model name.
- The colored background indicates the same rotating direction of the motor while the rotating direction of others are opposite.
- The speed is calculated by dividing the motor's synchronous speed (50Hz: 1500r/min、60Hz: 1800r/min) by the gear ratio. The actual speed is 2%~20% less than the displayed value, depending on the size of the load.
- To reduce the speed beyond the gear ratio in the table, attach a mid-gearbox (gear ratio: 10) between the gearhead and motor. In that case, the permissible torque is 8N·m.

容许力矩单位 Allowance Torque Unit: 上段 Upside (N·m) / 下段 Belowside (kgf·cm)

机型Type 电动机/减速器 Motor/Gearhead	减速比Gear Ratio	3	3.6	5	6	7.5	9	12.5	15	18	25	30	36	50	60	75	90	100	120	150	180	200	
																							转速Speed r/min
4IK25RGN-A	4GN□K	50Hz	0.49	0.58	0.81	0.97	1.2	1.5	2.0	2.4	2.9	3.7	4.4	5.3	6.6	7.9	8	8	8	8	8	8	8
4IK25RGN-E			5.00	5.91	8.26	9.89	12.2	15.3	20.4	24.4	29.6	37.7	44.9	54.1	67.3	80	80	80	80	80	80	80	80
4IK25RGN-C		60Hz	0.40	0.48	0.67	0.80	1.0	1.2	1.7	2.0	2.4	3.0	3.6	4.3	5.4	6.5	8	8	8	8	8	8	8
4IK25RGN-H			4.08	4.89	6.83	8.16	10.2	12.2	17.3	20.4	24.4	30.6	36.7	43.8	55.1	66.3	80	80	80	80	80	80	80

■ 容许悬挂负载·容许轴向负载

PERMISSIBLE OVERHUNG LOAD AND THRUST LOAD

电动机 (圆轴型) → P217页
减速器 → P217页

Motor (Round Shaft) → P217
Gearhead → P217

■ 减速器的容许负载惯性惯量 J

PERMISSIBLE LOAD INERTIA J FOR GEARHEAD

→ P218页 → P218

■ 外形图 (单位 mm)

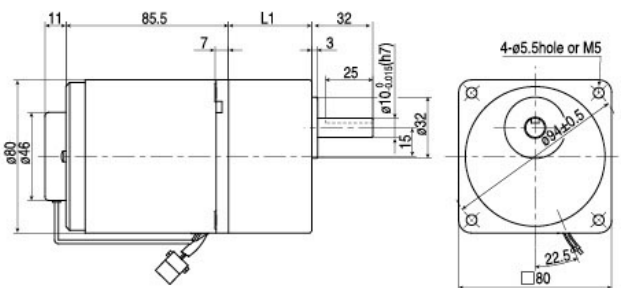
DIMENSIONS (Unit mm)

减速器附有安装用螺丝

Mounting screws are included with gearhead.

● 导线型 Lead wiring Type

重量 Weight: 电动机 Motor 1.7kg 减速器 Gearhead 0.8kg

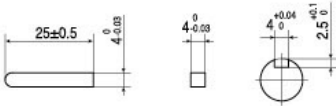


电动机型号 Motor Model	减速器型号 Gearhead Model	减速比 Gear Ratio	L1
4IK25RGN-A	4GN□K	3~18	32
4IK25RGN-E		25~200	43.5
4IK25RGN-C			
4IK25RGN-H			

- 减速器型号的□中为减速比的数值
- Enter the gear ratio in the box (□) within the model name

● 键·键槽 (减速器附件)

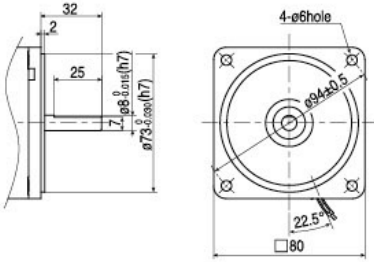
Key-keywa (The key is included with the gearhead)



● 圆轴型的转轴部分 Shaft Section of Round Shaft Type

除重量及轴部外, 电动机外形与齿轮轴相同

Excluding weight and the shaft section Motor shape are the same as those of the pinion shaft

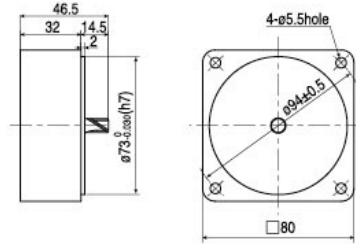


● 中间减速器 Mid-gearbox

可安装在GN齿轮轴型上

Can be connected to GN pinion Shaft type 4GN10XK

重量 Weight: 0.41kg



连接图 CONNECTION DIAGRAMS

