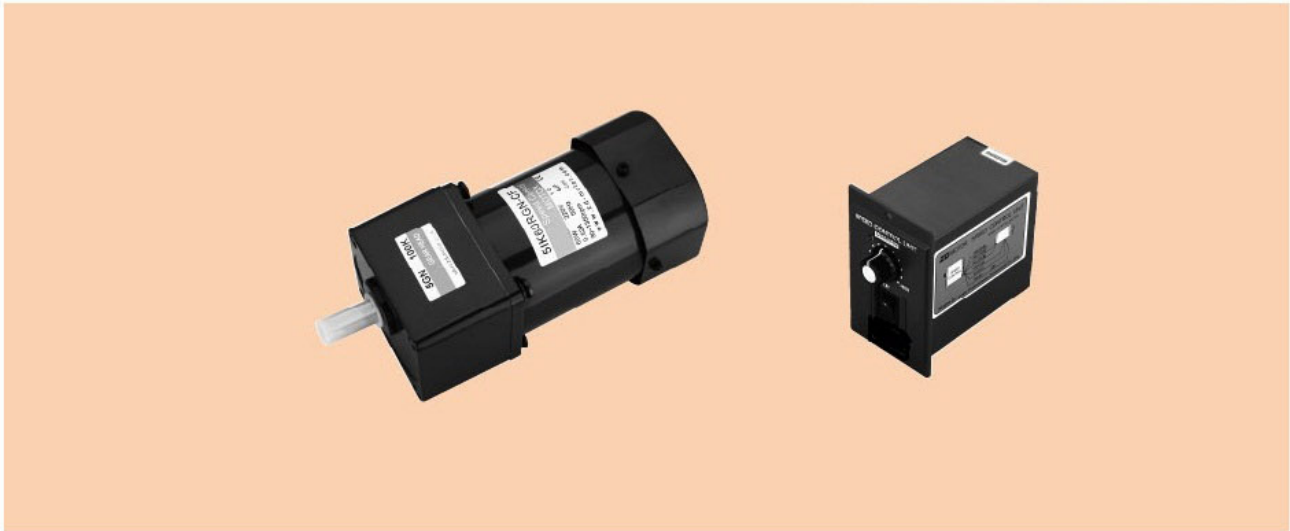


# 调速电动机 SPEED CONTROL MOTORS

## 6W

□60mm

CE CCC RoHS ISO9001



### 规格 / 连续额定 SPECS / CONTINUOUS RATING

品名Model 导线型 Lead Wire Type	机型Type 圆轴型 Round Shaft	输出功率 Output power W	电压 Voltage V	频率 Frequency Hz	调速范围 Speed Control Range r/min	额定转矩 Rated Torque		启动转矩 Starting Torque mN.m	电流 Current A	电容器容量 Capacitor $\mu$ F
						120r/min mN.m	120r/min mN.m			
2IK6RGN-A	2IK6RA-A	6	1ph100	50	90~1400	50	30	35	0.260	3.5
			1ph110	60	90~1700	50	29	35	0.280	
2IK6RGN-E	2IK6RA-E	6	1ph120	60	90~1700	50	29	30	0.200	2.0
			1ph220						0.230	
2IK6RGN-C	2IK6RA-C	6	1ph230	50	90~1400	55	29	35	0.150	0.8
			1ph220							
2IK6RGN-H	2IK6RA-H	6	1ph230	60	90~1700	55	29	35	0.150	

● 各种安全规格以电动机铭牌上的型号取得认定。

● When the motor is approved under various safety standards, the model name on the nameplate is the approved model name.

### 种类 TYPE

#### ● 电动机 MOTOR

机型 Type	型号 Model	
	齿轮轴型 Pinion Shaft	圆轴型 Round Shaft
导线型 Lead Wire Type	2IK6RGN-A	2IK6RA-A
	2IK6RGN-E	2IK6RA-E
	2IK6RGN-C	2IK6RA-C
	2IK6RGN-H	2IK6RA-H

#### ● 平行轴减速器(另售) PARALLEL SHAFT GEARHEAD (SOLD SEPARATELY)

减速器种类 Gearhead Type	减速器型号 Gearhead Model	减速比 Gear Ratio
长寿命·低噪音 Long Life · Low Noise	2GN□K	3、3.6、5、6、7.5、9、 12.5、15、18、25、30、 36、50、60、75、90、 100、120、150、180、200
	2GN10XK (中间减速器Mid-gearbox)	

● 减速器型号的□中为减速比的数值

● Enter the gear ratio in the box (□) within the model name

## ■ 装有减速器时的容许转矩

### ALLOWABLE TORQUE WHEN BEING WITH GEARHEAD

- 减速器·中间减速器另售
- 减速器型号的□中为减速比的数值。
- □色表示与电动机同一方向运转，其他则为相反方向。
- 转速是以电动机的同步转速 (50Hz: 1500r/min、60Hz: 1800r/min) 为基准除以减速比而算出来的数值。实际转速将随负载大小变化而比所示数值减少 2%~20% 左右。
- 希望以大于下表的减速比进行进一步减速时，可在电动机与减速器之间安装减速比为10的中间减速器。这时的容许转矩为3N·m
- Gearhead and mid-gearbox can be sold separately.
- Enter the gear ratio in the box (□) within the model name.
- The colored background □ indicates the same rotating direction of the motor while the rotating direction of others are opposite.
- The speed is calculated by dividing the motor's synchronous speed (50Hz: 1500r/min、60Hz: 1800r/min) by the gear ratio. The actual speed is 2%~20% less than the displayed value, depending on the size of the load.
- To reduce the speed beyond the gear ratio in the table, attach a mid-gearbox (gear ratio: 10) between the gearhead and motor. In that case, the permissible torque is 3N·m.

容许力矩单位 Allowance Torque Unit: 上段 Upside (N·m) / 下段 Belowside (kgf·cm)

机型Type 电动机/减速器 Motor/Gearhead	减速比Gear Ratio	容许力矩																					
		3	3.6	5	6	7.5	9	12.5	15	18	25	30	36	50	60	75	90	100	120	150	180	200	
2IK6RGN-A	2GN□K	50Hz	0.12	0.14	0.19	0.23	0.29	0.35	0.49	0.58	0.70	0.88	1.1	1.3	1.6	1.9	2.4	2.9	3	3	3	3	3
		60Hz	0.12	0.14	0.19	0.23	0.29	0.35	0.49	0.58	0.70	0.88	1.1	1.3	1.6	1.9	2.4	2.9	3	3	3	3	3
2IK6RGN-E	2GN□K	50Hz	1.22	1.43	1.94	2.35	2.96	3.57	5.0	5.92	7.14	8.98	11.2	13.3	16.3	19.4	24.5	29.6	30	30	30	30	30
2IK6RGN-C		60Hz	0.10	0.12	0.16	0.19	0.24	0.29	0.41	0.49	0.58	0.73	0.88	1.1	1.3	1.6	2.0	2.4	2.6	3	3	3	3
2IK6RGN-H	2GN□K	50Hz	1.02	1.22	1.63	1.94	2.45	2.96	4.18	5.0	5.92	7.45	8.98	11.2	13.3	16.3	20.4	24.5	26.5	30	30	30	30
2IK6RGN-H		60Hz	1.02	1.22	1.63	1.94	2.45	2.96	4.18	5.0	5.92	7.45	8.98	11.2	13.3	16.3	20.4	24.5	26.5	30	30	30	30

## ■ 容许悬挂负载·容许轴向负载

### PERMISSIBLE OVERHUNG LOAD AND THRUST LOAD

电动机 (圆轴型) → P217页  
减速器 → P217页

Motor (Round Shaft) → P217  
Gearhead → P217

## ■ 减速器的容许负载惯性惯量 J

### PERMISSIBLE LOAD INERTIA J FOR GEARHEAD

→ P218页 → P218

## ■ 外形图 (单位 mm)

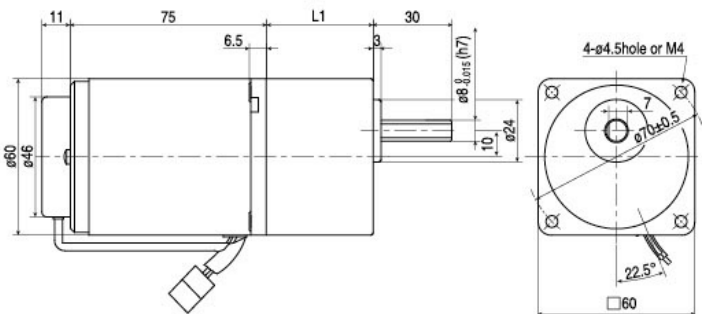
### DIMENSIONS (Unit mm)

减速器附有安装用螺丝

Mounting screws are included with gearhead.

#### ● 导线型 Lead wiring Type

重量 Weight: 电动机 Motor 0.85kg 减速器 Gearhead 0.4kg



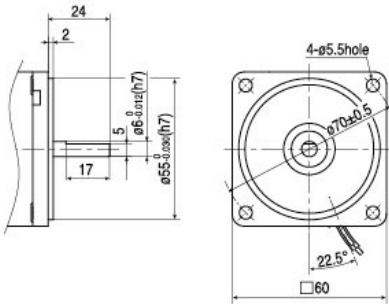
电动机型号 Motor Model	减速器型号 Gearhead Model	减速比 Gear Ratio	L1
2IK6RGN-A	2GN□K	3~18	32
2IK6RGN-E		25~200	41
2IK6RGN-C			
2IK6RGN-H			

- 减速器型号的□中为减速比的数值
- Enter the gear ratio in the box (□) within the model name

● 圆轴型的转轴部分 Shaft Section of Round Shaft Type

除重量及轴部外, 电动机外形与齿轮轴相同

Excluding weight and the shaft section Motor shape are the same as those of the pinion shaft

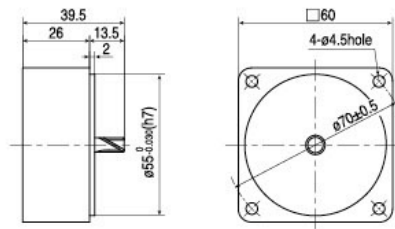


● 中间减速器 Mid-gearbox

可安装在GN齿轮轴型上

Can be connected to GN pinion Shaft type 2GN10XK

重量 Weight: 0.24kg



■ 连接图 CONNECTION DIAGRAMS

